

Wittmann

Battenfeld



world of innovation
www.wittmann-group.com

Preface

To offer complete solutions as a single source supplier for the benefit of plastics processors and their products: this is the task and promise to which WITTMANN and WITTMANN BATTENFELD have committed themselves.

Today, the WITTMANN Group is the only company worldwide that has made good on this promise; supplying all of the equipment that is needed for the plastics injection molding industry.

This smooth interaction of machine, automation and

peripheral equipment is the key ingredient needed for real energy-efficiency, cost-effectiveness and process safety in injection molding.

No less important for us is the ever-evolving user friendliness of our equipment and the very high quality of the machine build. We live and work in a spirit of permanent innovation – and this spurs the continuous improvement of our products.

The companies of the WITTMANN Group and all employees remain deeply committed to this idea of

permanent innovation – one day at a time – everywhere in the world – and for more than 40 years now.



History of the WITTMANN Group

WITTMANN is one of the leading manufacturers of robots and peripheral equipment for the plastics industry worldwide. WITTMANN's product range includes robots and automation systems, automatic material handling with dryers and plastics recycling, temperature controllers and chillers for machine tools and volumetric and gravimetric blenders.

On April 1, 2008 WITTMANN took over the BATTENFELD Kunststoffmaschinen Ges.m.b.H. at Kottlingbrunn, Lower Austria. This led to the integration of both product lines – WITTMANN auxiliary equipment and injection

molding machines by WITTMANN BATTENFELD – and thus provided the "one stop shop" advantage that the world's plastics processors had been looking for – an absolutely seamless combination of processing machines, automation and auxiliary equipment.

2017/2018: Further extension of the capacity at WITTMANN BATTENFELD in Kottlingbrunn.

2016: Establishment of WITTMANN BATTENFELD Slovakia and WITTMANN BATTENFELD South Korea.

2015: Opening of the new premises in Taiwan. Setting

up of the new production facility of the material handling department in Wolkersdorf near Vienna. Opening of the new sales subsidiary in Hungary. Purchase of BATTENFELD Poland, establishment of WITTMANN BATTENFELD Poland.

2014: Commissioning of the new WITTMANN BATTENFELD assembly hall in Kottlingbrunn, Austria, and increasing the Kottlingbrunn capacity for the production of large injection molding machines.

2013: Extension of the production capacity at WITTMANN Kunststoffgeräte GmbH in Vienna, Austria:

start-up of the new metal sheet forming department. Extension of the headquarters of the WITTMANN BATTENFELD subsidiary in Torrington, Connecticut, USA.

2012: Extensions of the WITTMANN BATTENFELD India subsidiary in Chennai, of WITTMANN Germany in Nuremberg, and the WITTMANN BATTENFELD plant in Kottlingbrunn, Austria.

2011: WITTMANN BATTENFELD CZ moves to a new and bigger plant.

2010: Product launches of the new WITTMANN BATTENFELD *PowerSeries*.

2009: Ground-breaking ceremony for the new WITTMANN BATTENFELD sales and service center in Meinerzhagen, Germany. Establishment of WITTMANN BATTENFELD Romania.

2008: WITTMANN acquires BATTENFELD Injection Molding (now WITTMANN BATTENFELD). Establishment of WITTMANN BATTENFELD Bulgaria.

2007: WITTMANN Mexico and WITTMANN Canada are moving to new and bigger plants. Nucon WITTMANN acquires the M-tek dosing and conveying product line and becomes WITTMANN Canada. Establishment of WITTMANN India.

2006: Acquisition of REGAD, France, manufacturer of high-precision molds for the packaging market. Establishment of the WITTMANN subsidiary in Turkey. Establishment of the WITTMANN USA West Coast Technical Center.

2005: Start of operations at WITTMANN China.

2004: Establishment of WITTMANN Thailand.

2003: Establishment of WITTMANN Czech Republic.

2002: Purchase of Capitol Temptrol, USA, manufacturer of cooling systems for the plastics industry.

2001: Market introduction of the new control with color graphics screens for robot and material handling systems. Expansion of the production areas in Vienna and USA to satisfy the increasing demand. Establishment of WITTMANN Singapore and Malaysia. Establishment of WITTMANN China.

2000: Acquisition of CMB, France, manufacturer of granulators for the plastics industry. Establishment of WITTMANN Brazil.

1999: Acquisition of the Canadian company Nucon, manufacturer of material handling systems.

1998: Start of robot production at WITTMANN Hungary. Establishment of WITTMANN Mexico. Acquisition of Cramer Trocknerbau, Kierspe, Germany, manufacturer of plastics dryers.

1997: Establishment of WITTMANN Hungary.

1992: Introduction of the new revolutionary CAN-Bus control for robots at "K" industrial fair. Establishment of WITTMANN Spain.

1991: Establishment of WITTMANN France.

1989: Founding of WITTMANN USA.

1988: Acquisition of robot manufacturing from Colortronic, Germany.

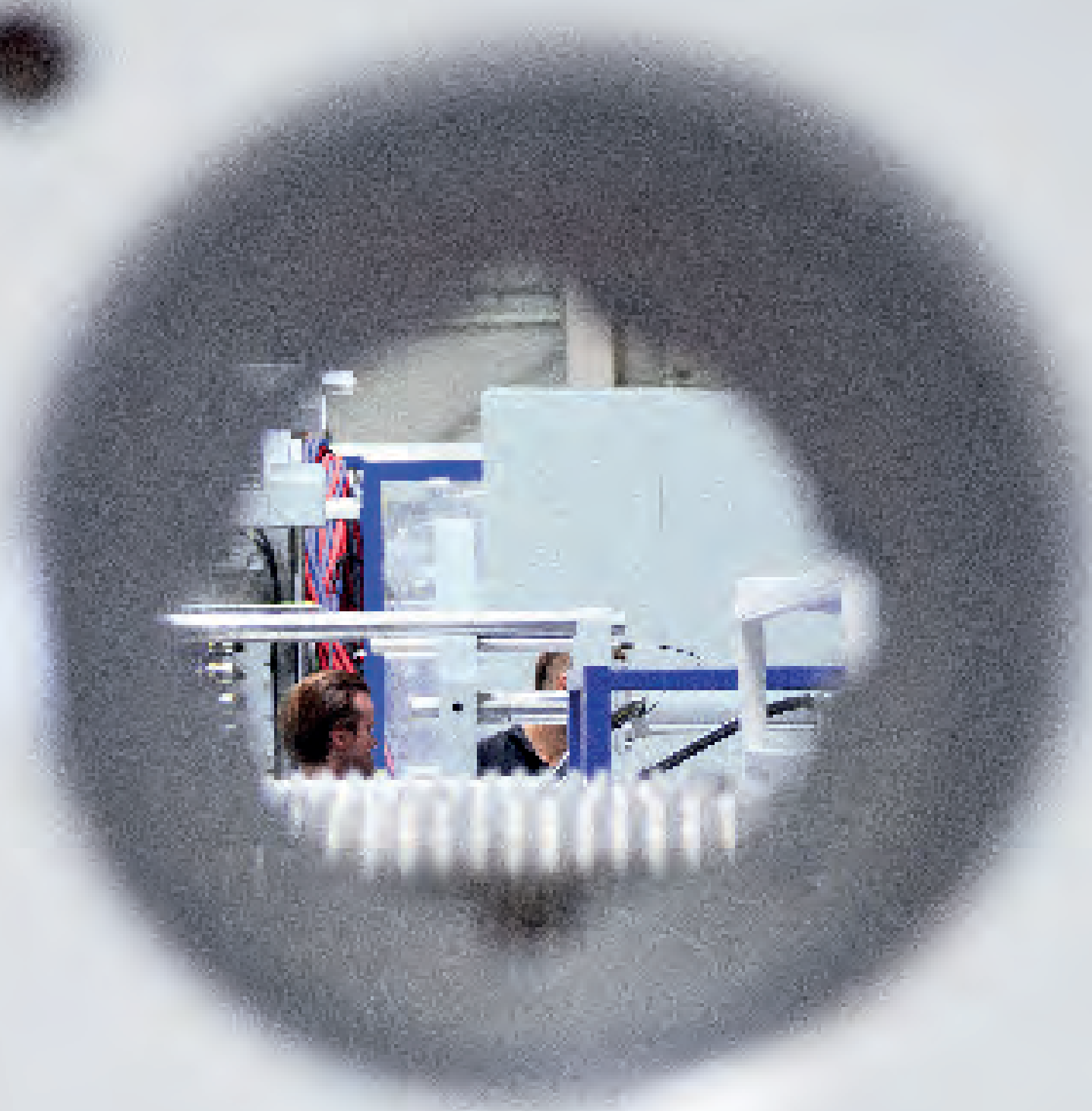
1986: First representation in the USA.

1985: Production of the first CNC robots.

1983: Founding of WITTMANN Germany.

1979: Manufacturing of mold temperature controllers.

1976: WITTMANN founded by Dr. Werner Wittmann with the manufacture of water flow regulators.



Headquarters and Production

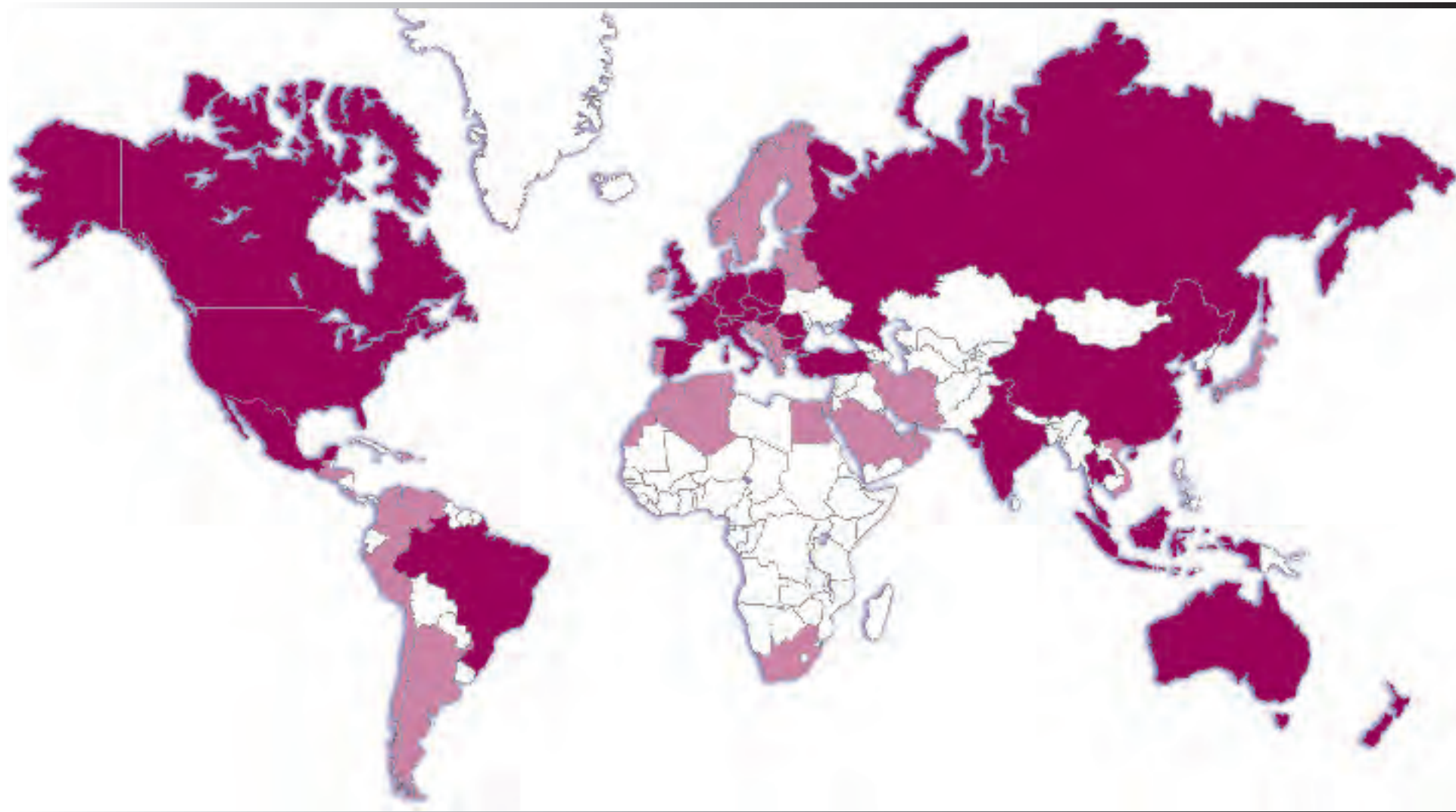


WITTMANN and WITTMANN BATTENFELD operate 8 production facilities in 5 countries: Austria, Hungary, France, USA, and China.

The WITTMANN Group's companies are driven by a policy of permanent product innovation and adherence to the highest quality standards.

Specialization in all the various facets of plastics processing technology and a continuing commitment to in-house production help ensure the worldwide competitiveness of the Group and its products.





Global Distribution

Subsidiaries

Australia – Austria – Belgium – Brazil
Bulgaria – Canada – China
Czech Republic – France – Germany
Great Britain – Hungary – India – Indonesia
Italy – Malaysia – Mexico – Poland
Romania – Russia – Singapore – Slovakia
South Korea – Spain – Switzerland – Taiwan
Thailand – Turkey – USA

Agencies

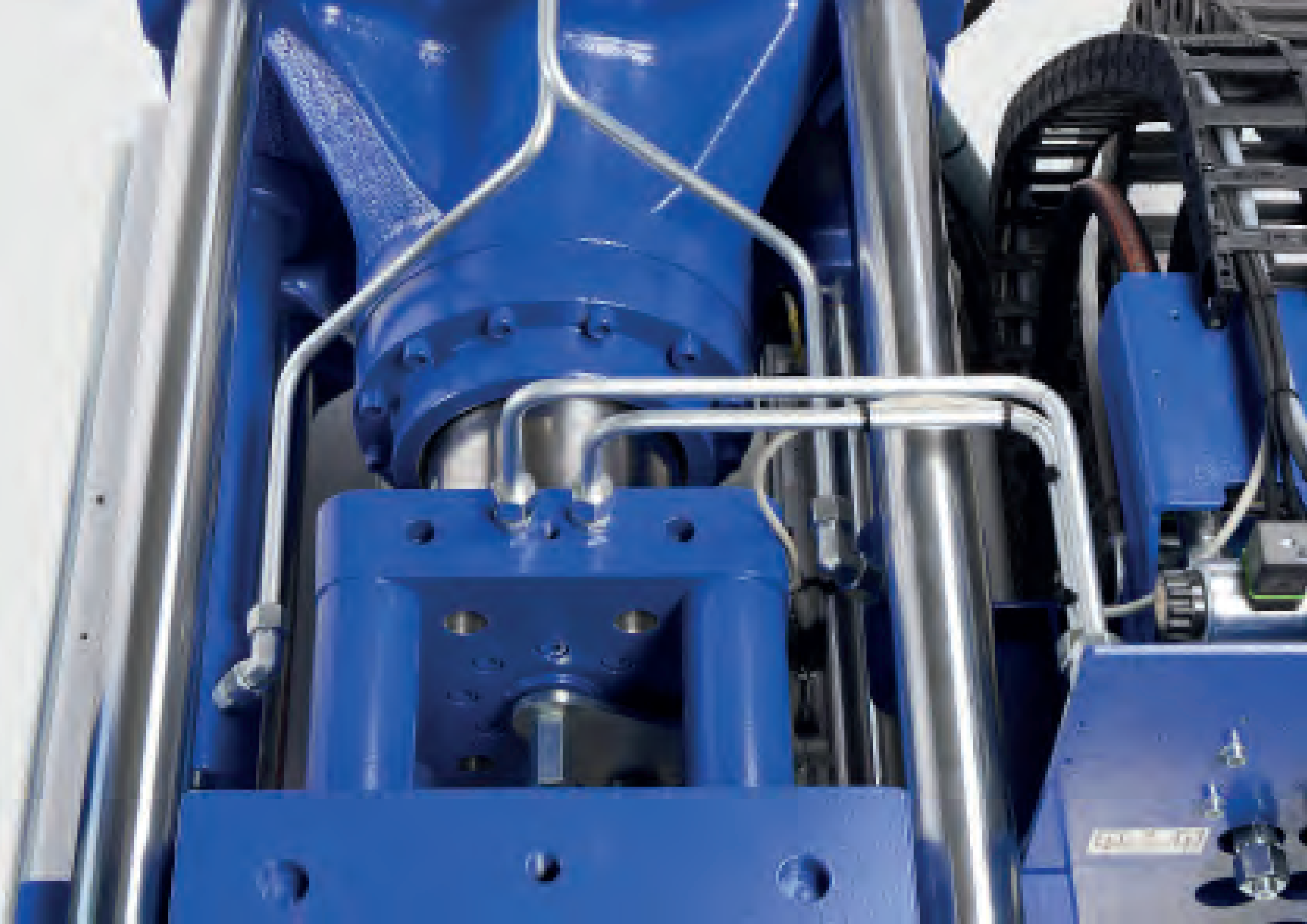
Algeria – Argentina – Chile – Colombia
Denmark – Ecuador – Egypt – Finland – Greece
Guatemala/Honduras/El Salvador – Israel
Latvia/Lithuania – Morocco – Peru – Portugal
Saudi Arabia/Emirates/Kuwait/Oman/Qatar
Slovenia/Croatia/Bosnia-Herzegovina/Kosovo/
Albania/Serbia – South Africa – Sweden/Norway
Switzerland – Tunisia – Ukraine – Venezuela
Vietnam

With 34 direct subsidiary offices, the WITTMANN Group is represented in all major plastics markets around the world.

Business activities include the supply and the start-up of entire plastics processing systems, spare part support, and even upgrading of second-hand machinery.

In addition, 24 regionally active agencies represent the WITTMANN Group's products in the smaller markets throughout the world.





SmartPower



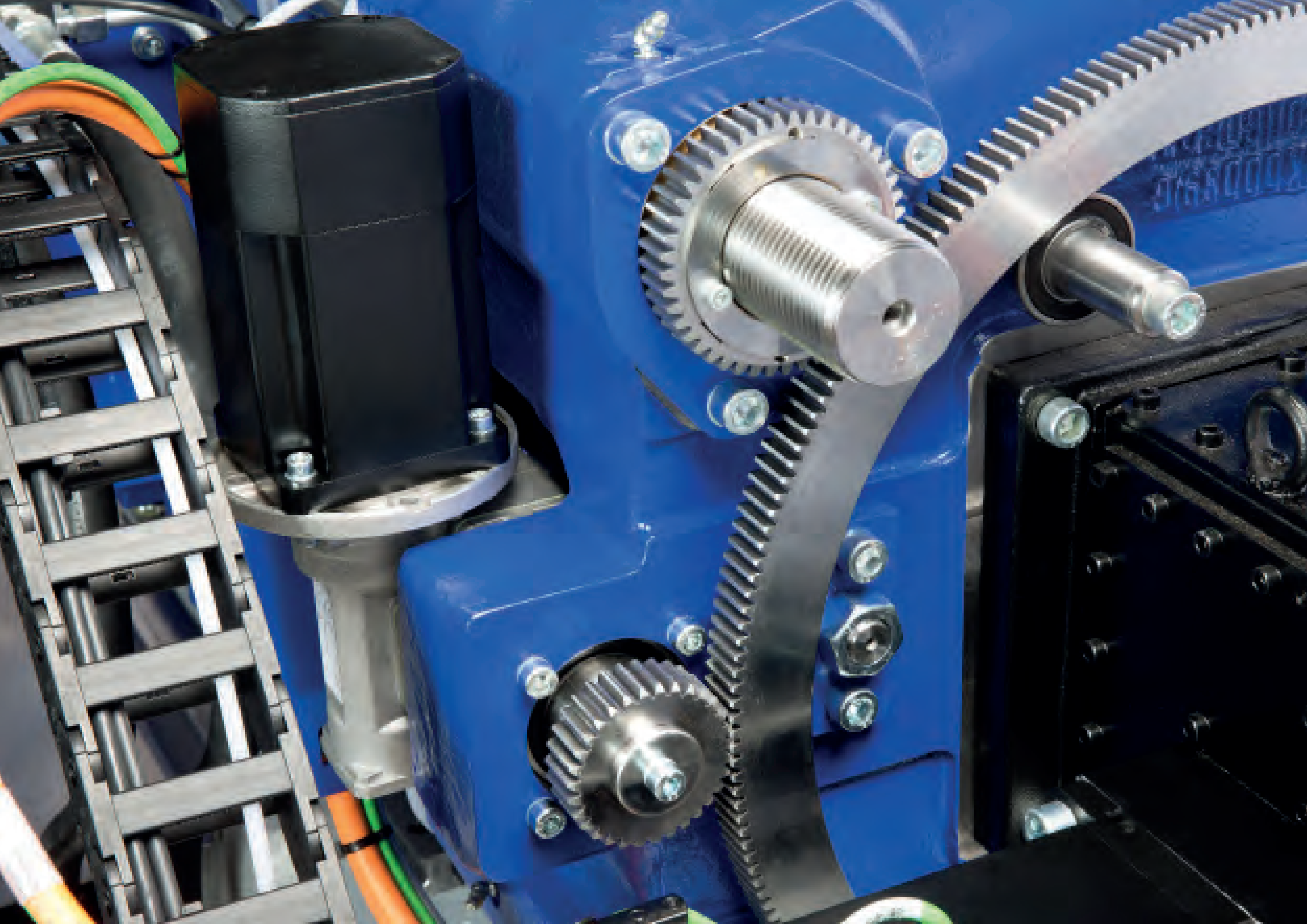
SmartPower 120

Servo-hydraulic machines of compact and modular construction allow for a multifunctional use, and can be optimized for every individual case.

The combination of this machine's intelligent flexible drive concept with the KERS technology provides for the highest energy efficiency.

The *SmartPower* stands for precision, efficiency, and user-friendliness within a clamping force range of 25 to 350 tons. These machines are ideally suited for standard and multi-component injection molding.





EcoPower



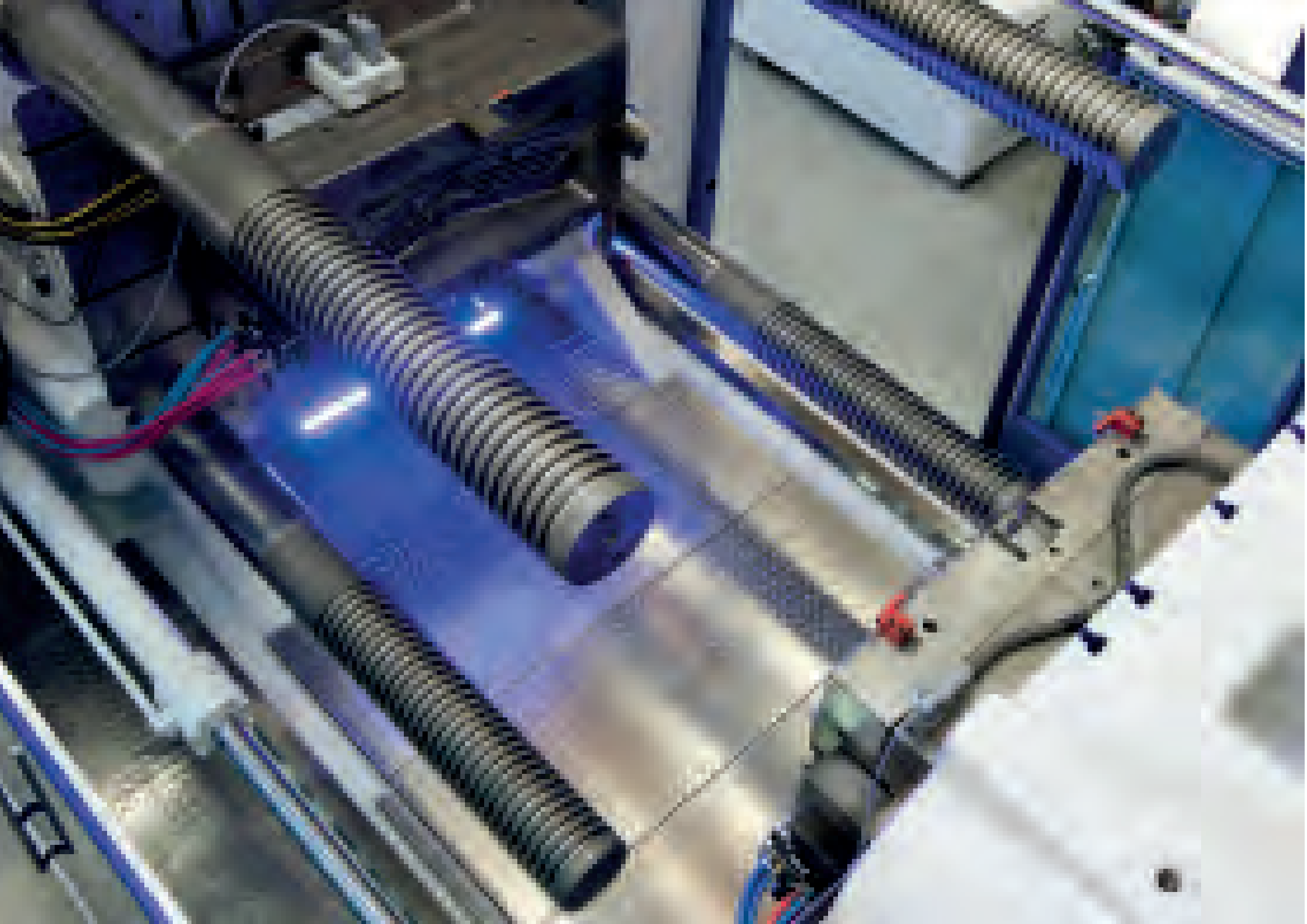
EcoPower 110

The all-electric *EcoPower* injection molding machine is available with clamping forces ranging from 55 to 300 tons. It also offers the highest energy-efficiency and precision in production.

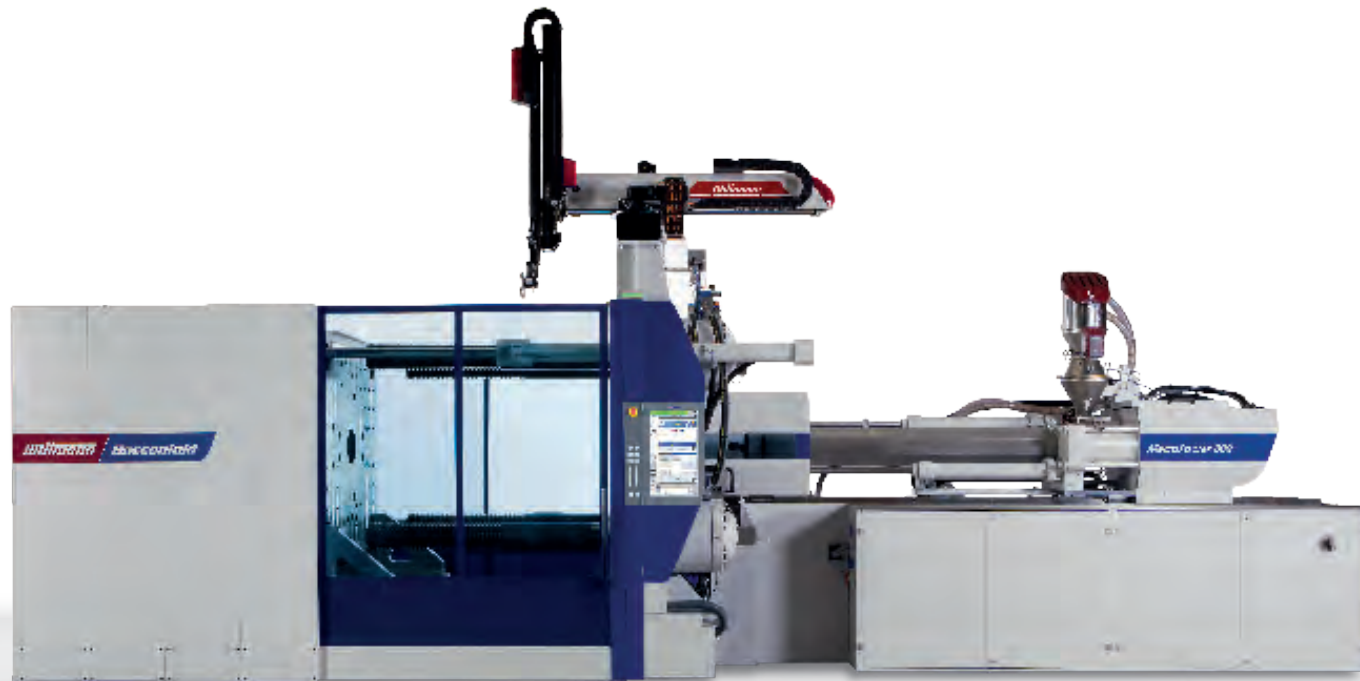
The compact injection unit and the directly driven clamping unit provide for maximum productivity.

The machine also offers a small footprint and an open modular design at the top and on the injection side for ease of operation.





MacroPower

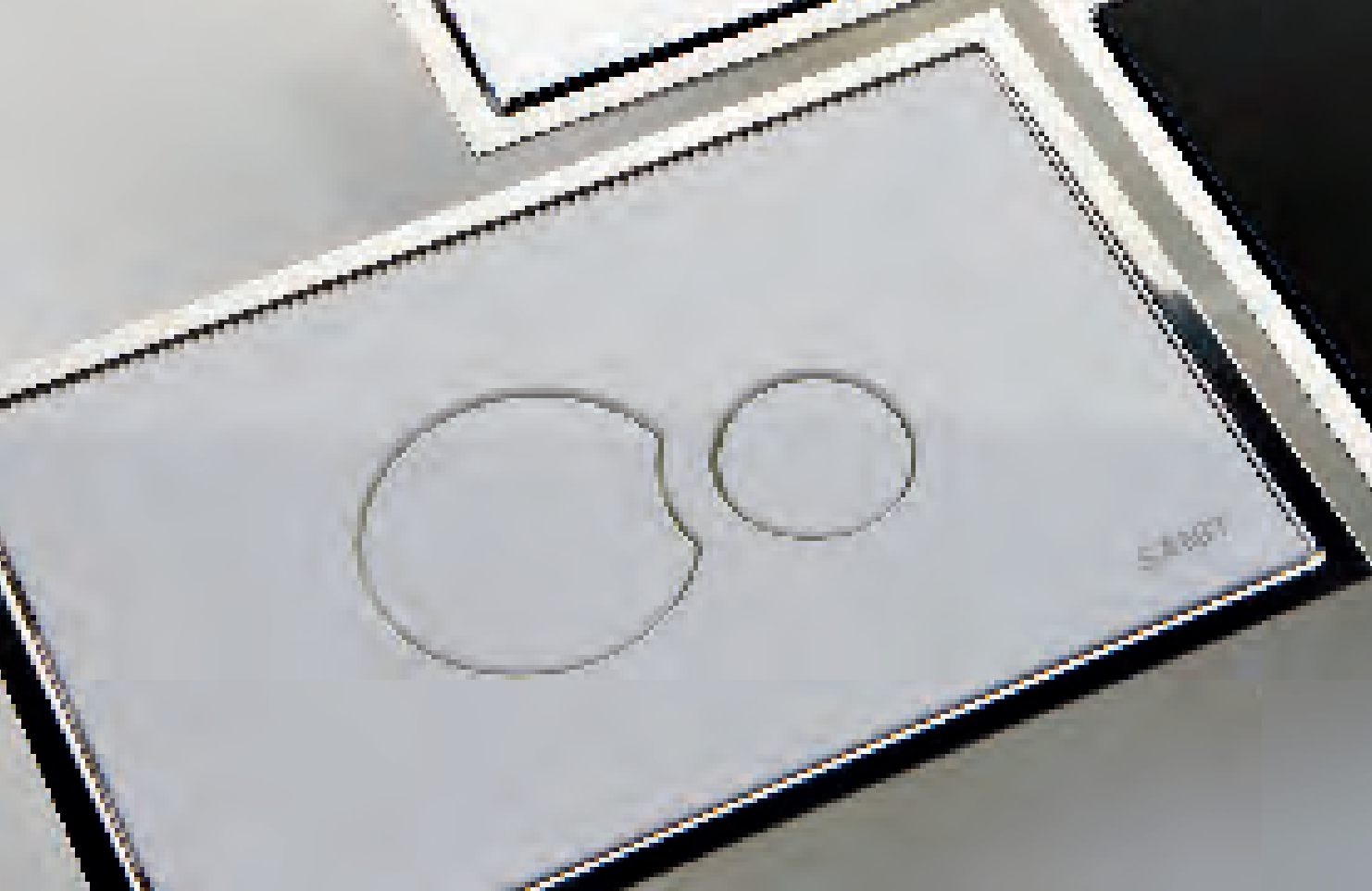


MacroPower 800

Compactness through short overall length, modularity, precision, and high speed: with these advantages, the *MacroPower* is defining the concept of the large machine in a new manner – with clamping forces ranging from 400 to 2,000 tons.

An extensive range of optional features enables the most different extension alternatives for the application of multi-component injection molding as well as the advanced CELL-MOULD® and AIRMOULD® technologies.





AIRMOULD®
COMBIMOULD

BFMOLD®
VARIOMOULD®
CELLMOULD®

PIM

LIM

Today's plastics processing requires that ideas must be realized in the most cost-efficient way, avoiding any unnecessary complexity.

At this point, choosing the right processing procedure plays a decisive role – and WITTMANN BATTENFELD has process technology to match user needs.

WITTMANN BATTENFELD is a declared specialist in the field of fluid assisted injection molding, and for processing liquid silicone, for powder injection molding, multi-component and variotherm technology – and also for productive combinations of all these methods.





Robot Technology



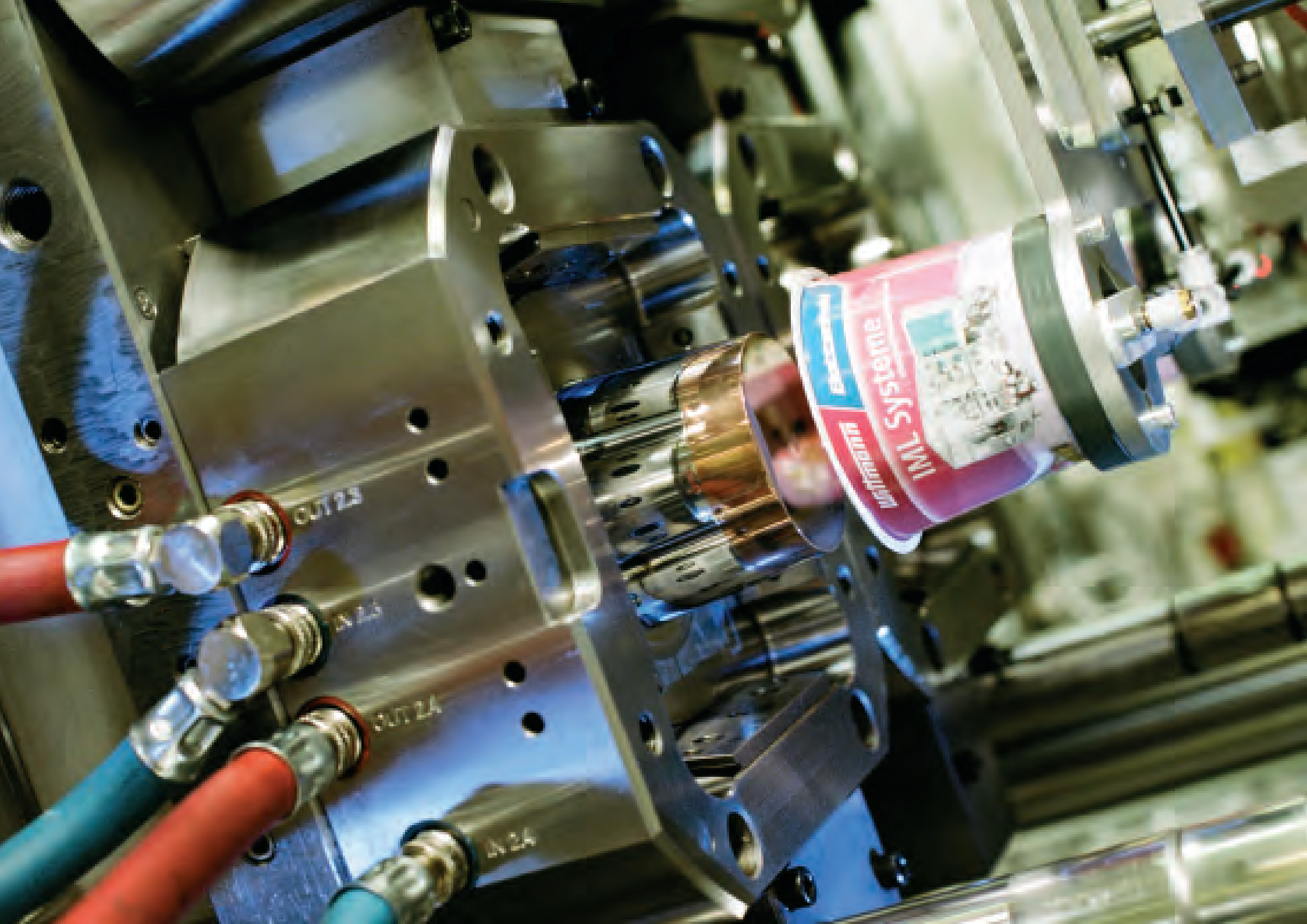
WITTMANN servo robots are built to the highest specifications; horizontal axes constructed with steel beams and a kick-stroke set-up constructed with aluminum special section tubes.

For additional degrees of freedom, WITTMANN supplies optional servo rotational axes around all 3 principal axes.

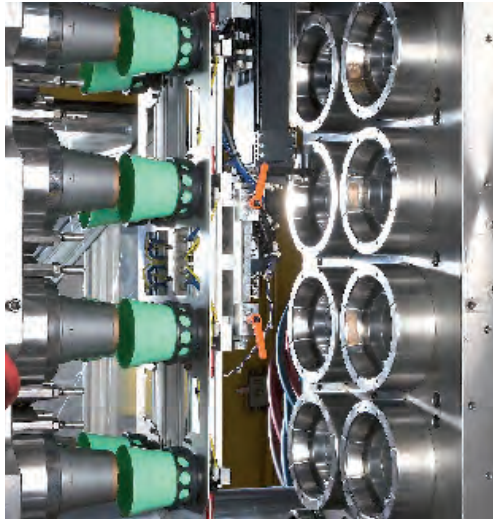
The touch-screen robot control allows access to special program functions that provide the user with unrestricted flexibility.

A WITTMANN bestseller: W818 robot for clamping forces of 20 to 300 tons





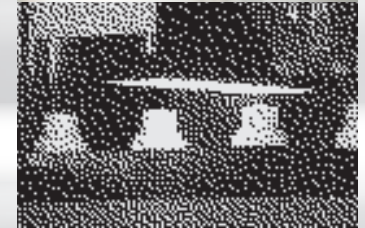
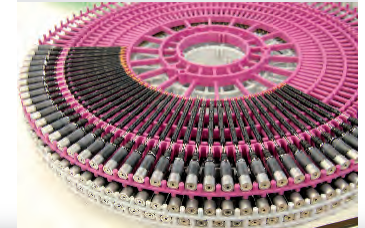
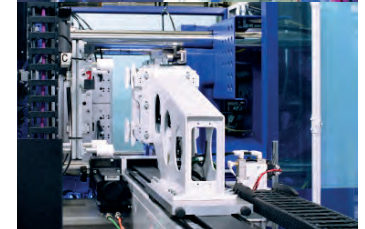
Automation



WITTMANN sprue pickers and servo robots are ubiquitous in plastics processing; typically used for part insert operations, part removal and are generally essential in any part of the injection molding process.

WITTMANN's comprehensive range of robots can be used for handling any payload. The WITTMANN product range also comprises special automation builds that enable the fastest removal of parts and the automation of the In-Mold Labeling (IML) process.

Highest quality allows for the shortest cycle times.





Flow Control

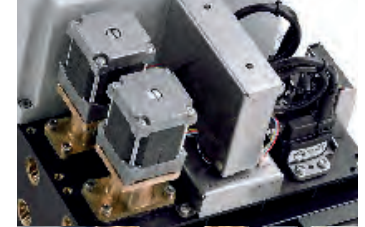
Water flow controllers from WITTMANN are robust and easy to handle.

And for many years now, these devices have been the industry standard for the plastics processing sector.

WITTMANN currently produces the most innovative product developments in the field today: intelligent flow controllers with touch-screen displays that extensively monitor and document the entire production process.



FLOWCON plus and Series 101 flow controller





Temperature Control

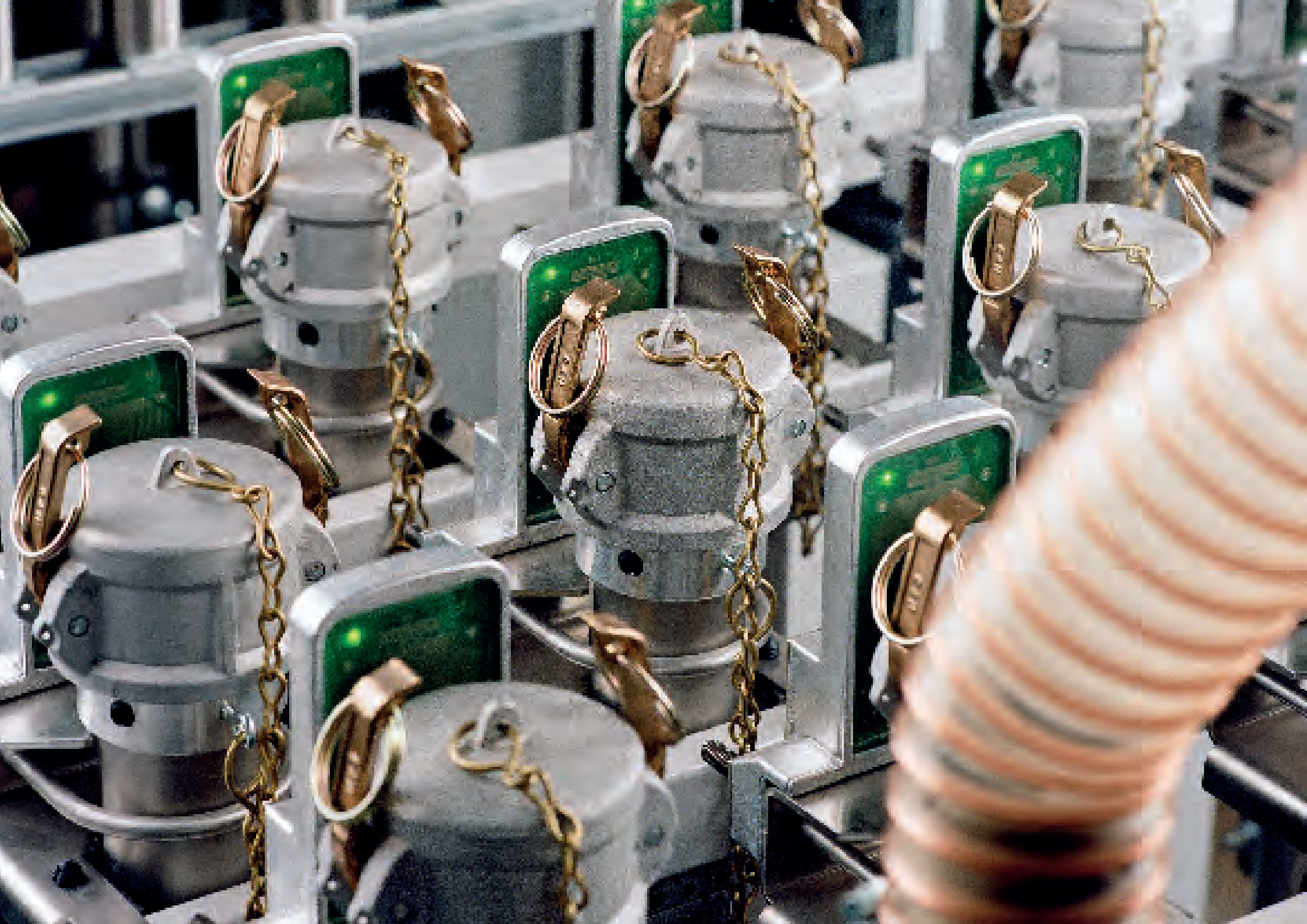
Powerful, with maximum ease of use, and immensely successful for a long time now: WITTMANN TEMPRO temperature controllers enjoy a very good reputation in the plastics processing sector.

The TEMPRO series includes competitively-priced standard models for simple applications; directly-cooled units with very high capacities, up to oil-based units for the highest demanding process applications.



TEMPRO primus C120, TEMPRO basic C120, TEMPRO basic C90, TEMPRO plus D single and dual zone units





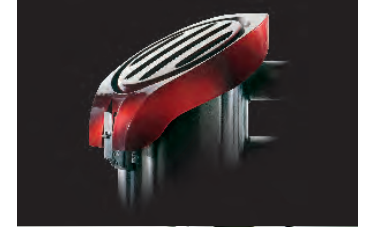
Material Conveying/Central Systems

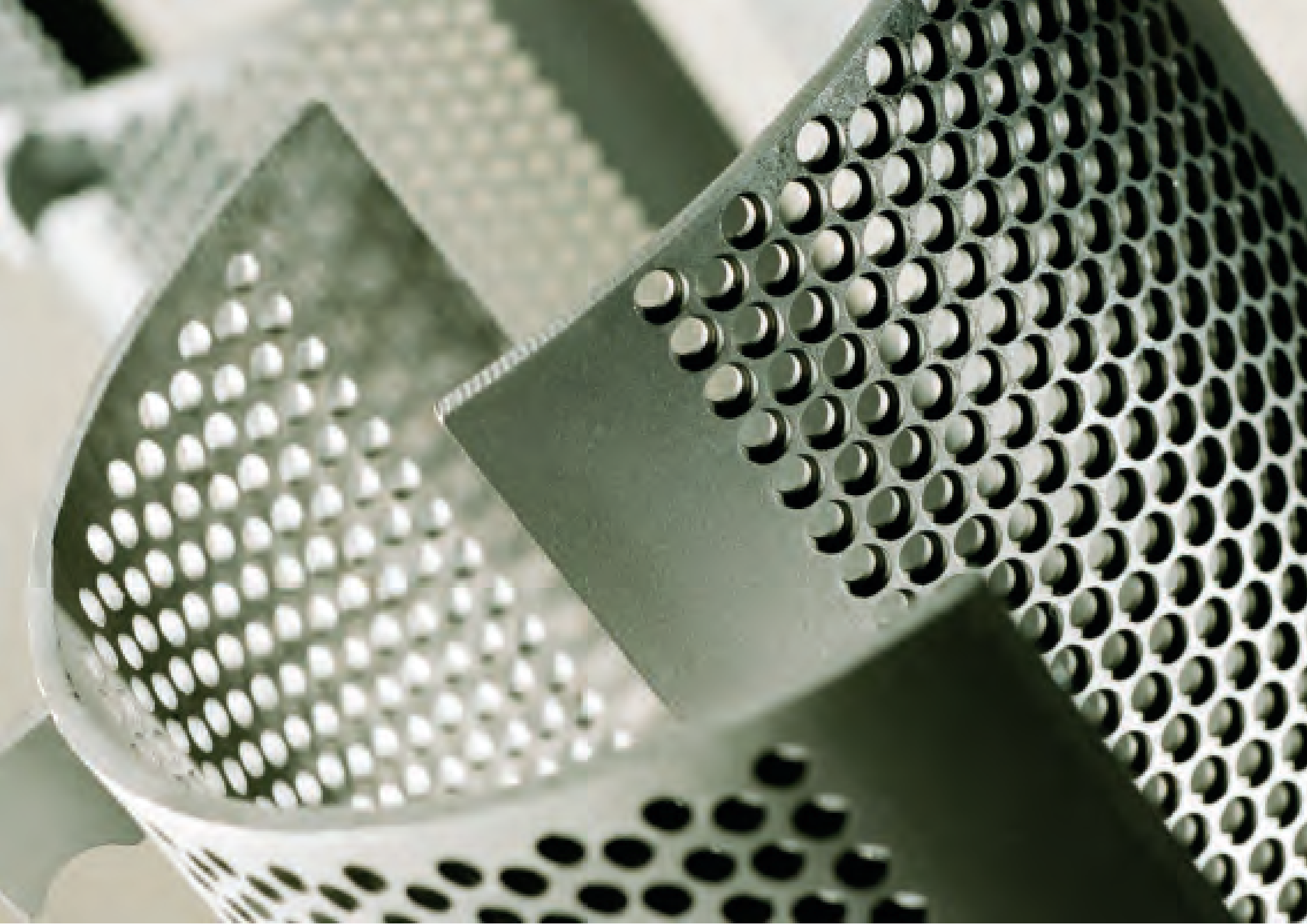


When it comes to drying, conveying, and blending plastics material, it is necessary that the diverse operations function as one.

Only in this way, it will be possible in the long run to assure a production process that is working absolutely frictionless.

Drying and conveying systems from WITTMANN integrate all equipment within a centrally controlled and singular process, thus ensuring optimum manageability and reliability at all times.





Recycling

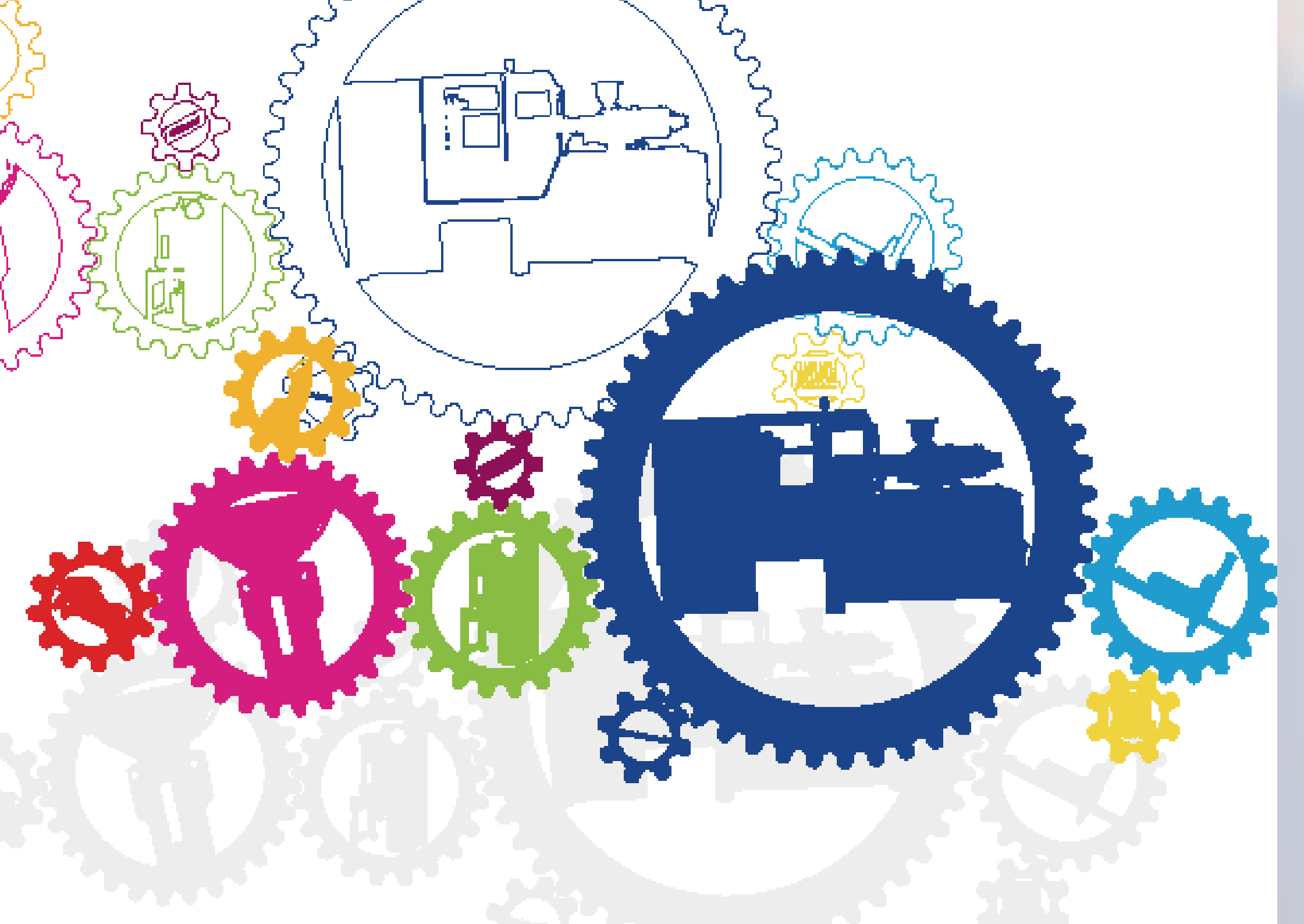
Strategies for the optimization of all resources are at the center of our concerns.

Inline recycling of plastics is a clear priority.

WITTMANN screenless granulators and blade granulators (used as central or as beside-the-press solutions) make clean regrind from even the most different sprues and parts (made of soft, tough or glass fiber reinforced plastics). This regrind can typically be re-introduced in the manufacturing process.



G-Max 33, S-Max 3, JUNIOR DOUBLE 4 beside-the-press granulators, and ML 33 central granulator



WITTMANN 4.0



Schematic representation: integration of auxiliaries in the machine control

We aim for seamless production-related integration of injection molding machine, automation and auxiliary equipment, thus bringing together all functions in one complete working cell.

The ambition and intention of the WITTMANN Group is to comprehensively integrate all devices in one single control, thus allowing for unlimited access to all operations.

We are on the way to WITTMANN 4.0, our own vision of Industry 4.0.





Training and Service



Training facility at WITTMANN BATTENFELD in Torrington, CT, USA

The WITTMANN Group offers worldwide service to the plastics processing industries. Using the most modern communications media, our service is available around the clock.

WITTMANN Web-Service provides expert technicians with direct access to the equipment, thus giving the customer hands-on service and quality.

Training programs are also offered at numerous locations around the world, ensuring that our partners deploy well-trained personnel in the field.



Subsidiaries of the WITTMANN Group

Headquarters in Austria

WITTMANN Kunststoffgeräte GmbH

Lichtblaustrasse 10
A-1220 Vienna
Kaplanstrasse 7
A-2120 Wolkersdorf
Tel. +43/1/250 39-0
info.at@wittmann-group.com
www.wittmann-group.com

WITTMANN BATTENFELD GmbH
Wiener Neustädter Strasse 81
A-2542 Kottlingbrunn
Tel. +43/2252/404-0
info@wittmann-group.com
www.wittmann-group.com

Australia / New Zealand
WITTMANN BATTENFELD
Australia Pty Ltd, Unit 9,
42 Garden Boulevard, Dingley
Village Victoria 3172, PO Box 614
Braeside Victoria 3195, Australia
Tel. +61 3 9551 4200
peter.lucas@wittmann-group.com.au
www.wittmann-group.com.au

*Belgium / Netherlands /
Luxemburg*
WITTMANN BATTENFELD
Benelux NV, Nieuwlandlaan 1A,
Industriepark B190,
B-3200 Aarschot
Tel. +32 (0)16 551180
info@wittmann-group.be

Brazil
WITTMANN BATTENFELD
do Brasil Ltda.
Av. Francisco de Angelis, 166 –
Jardim Okita, CEP 13043-030
Campinas SP, Brazil
Tel. +55-19 2511-8150
wittmann@wittmann-group.com.br
www.wittmann-group.com.br

Bulgaria
WITTMANN BATTENFELD
Bulgarien EOOD
Hr. Smirnenski Str. 24
4147 Kalekovets, Bulgaria
Tel. +359 3124 2284
jassen.sterev@wittmann-group.com

Canada
WITTMANN BATTENFELD
Canada Inc.
35 Leek Crescent, Richmond Hill,
ON L4B 4C2, Canada
Tel. +1 905 887-5355
info@wittmann-group.ca
www.wittmann-group.ca

China
WITTMANN Robot (Kunshan)
Co., Ltd.
No. 1 Wittmann Rd., Dianshanhu,
Kunshan, Jiangsu Province
China 215345
Tel. +86 512 5748 3388
WITTMANN BATTENFELD
(Shanghai) Co., Ltd.
No. 1 Wittmann Rd., Dianshanhu,
Kunshan, Jiangsu Province
China 215345
Tel. +86 512 57493088
info@wittmann-group.cn
www.wittmann-group.cn

Czech Republic
WITTMANN BATTENFELD
CZ spol. S.r.o.
Male Nepodrice 67
CZ-397 01 Pisek
Tel. 00420 382-272-995
info@wittmann-group.cz
www.wittmann-group.cz

France
WITTMANN BATTENFELD
France SAS
Centr'Alp, 365 Rue de Corporat
F-38430 Moirans
Tel. +33 4 76 310 880
info@wittmann-group.fr
www.wittmann-group.fr

Germany
WITTMANN BATTENFELD
Deutschland GmbH
Am Tower 2
D-90475 Nuremberg
Tel. +49 9128 7099-0
info.de@wittmann-group.com
Werner-Battenfeld-Strasse 1
D-58540 Meinerzhagen
Tel. +49 (0) 2354/72-0
empfang@wittmann-group.com

Great Britain / Ireland
WITTMANN BATTENFELD UK Ltd
Sanders Road, Finedon Road
Industrial Estate, Wellingborough
GB-NN8 4NL Northants
Tel. +44-1933275777
info@wittmann-group.co.uk
www.wittmann-group.co.uk

Hungary
WITTMANN Robottechnikai Kft.
Központ és gyártó üzem, Eke u. 6.
H-9200 Mosonmagyaróvár
Tel. +36 96 577470
WITTMANN BATTENFELD Kft.
Gyár utca 2., H-2040 Budaörs
Tel. +36 23 880 828
info.hu@wittmann-group.com

India
WITTMANN BATTENFELD
India pvt Ltd.
1 & 2 Arumugam Nagar, Chinna
Porur, Chennai 600 116, India
Tel. +91 44 42077009
info@wittmann-group.in

Indonesia
WITTMANN BATTENFELD
(Singapore) Pte. Ltd.
Indonesia Representative Office
Ruko Easton Jl. Gunung
Panderman, Blok A-09
ID 17550 Lippo Cikarang
Tel. +62 21 2909 3145
info@wittmann-group.sg

Italy
WITTMANN BATTENFELD Italia Srl
Via G. Mazzini n. 180/A
I-20816 Ceriano Laghetto (MB)
Tel. +39 (02) 96 98 101
info@wittmann-group.it
www.wittmann-group.it

Malaysia
WITTMANN BATTENFELD
(Malaysia) Sdn Bhd
No. 16, Jalan Bandar Limabelas
Pusat Bandar Puchong
47100 Selangor, D.E. Malaysia
Tel. +60 3 5882 6028
info@wittmann-group.my

Mexico

WITTMANN BATTENFELD
México S.A. de C.V.
Av. Rafael Sesma Huerta No. 21
Parque Industrial FINSA
C.P. 76246,
El Marqués Querétaro, Mexico
Tel. +52 442 10 17 100
WITTMANN BATTENFELD
Maquilas, Inc.
11601 Pellicano Drive C7
El Paso, TX 79936, USA
Tel. +1-915-594-7400
info@wittmann-group.mx
www.wittmann-group.mx

Poland

WITTMANN BATTENFELD Polska
Injection Moulding Technology
Adamowizna,
ul. Radziejowicka 108
05-825 Grodzisk Mazowiecki
Poland
Tel. +48 (0) 22 7243-807
battenfeld@battenfeld.pl
www.wittmann-group.pl

Romania

WITTMANN BATTENFELD S.R.L.
Cotroceni Business Center
B-dul Iuliu Maniu Nr. 7, Corp T,
Et. 2, Sector 6, Bucuresti
RO 061072
Tel. +40 720 227 255
bogdan.nestor@wittmann-group.ro
www.wittmann-group.ro

Russia/Belarus

OOO WITTMANN BATTENFELD
Altufievskoe shosse
house 48, block 1, office 19,
127566 Moscow city, Russia
Tel. +7/495/983-02-45
general@battenfeld.ru
www.battenfeld.ru

Singapore

WITTMANN BATTENFELD
(Singapore) Pte. Ltd.
No. 48 Toh Guan Road East, #03-
123, Enterprise Hub
Singapore 608586
Tel. +65 6795 8829
info@wittmann-group.sg

Slovakia

WITTMANN BATTENFELD SK
spol. s r.o. – L'. Stárka 2150/16,
911 01 Trenčín, Slovakia
Tel. +421 32 64 08 52
juraj.majersky@wittmann-group.sk
www.wittmann-group.sk

South Korea

WITTMANN BATTENFELD
Korea Ltd.
704-Complex(B), 13
Heungdeok 1-ro, Giheung-gu,
Yongin-si, Gyeonggi-do, Korea
Postcode: 16954
South Korea
Tel. +82 31 274 4812
chong.kim@wittmann-group.kr
www.wittmann-group.kr

Spain

WITTMANN BATTENFELD
SPAIN S.L.
Pol. Ind. Plans d'arau
C/Thomas Alva Edison Nr. 1
E-08787 La Pobla de Claramunt
Barcelona
Tel. +34-93 808 7860
WITTMANN BATTENFELD Norte
Errekaondo, 6. (Polígono)
E-48450 Etxebarri (Bizkaia)
Tel. +34-944 408 646
info@wittmann-group.es
www.wittmann-group.es

Switzerland

WITTMANN Kunststofftechnik AG
Uznacherstrasse 18
CH-8722 Kaltbrunn
Tel. +41-55293 40 93
info@wittmann-group.ch
www.wittmann-group.ch

Taiwan

WITTMANN BATTENFELD
(Taiwan) Co. Ltd.
No. 16, Gongyequ 36th Rd.,
Xitun Dist.
Taichung City 40768
Taiwan (R.O.C.)
Tel. +886 4 2359-5158
info@wittmann-group.tw
www.wittmann-group.tw

Thailand

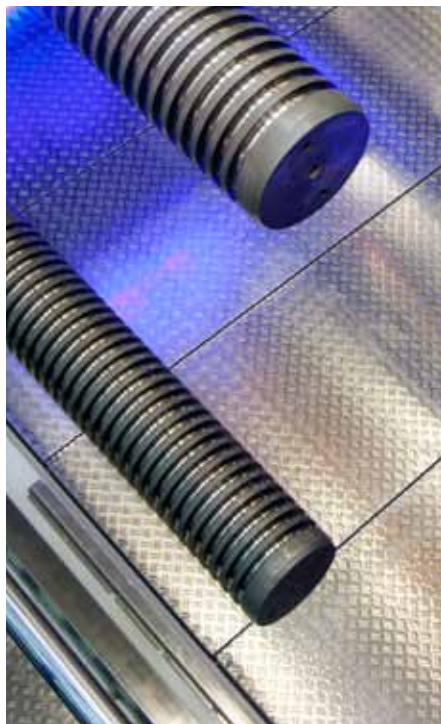
WITTMANN BATTENFELD
(Thailand) Co. Ltd.
294/2 Soi RK Office Park
Romklao Rd., Klong Sam Prawet
Lad Krabang
Bangkok 10520
Thailand
Tel. +66 2 184 9653
info@wittmann-battenfeld.co.th

Turkey

WITTMANN BATTENFELD
Plastik Makineleri Ltd. Sti.
Küçükyali is merkezi
Girne Mahallesi, Irmak Sokak
F Blok No: 20
TK-34852 Maltepe Istanbul
Tel. +90 216 550 93 14,
info.tr@wittmann-group.com
www.wittmann.com.tr

USA

WITTMANN BATTENFELD, INC.
1 Technology Park Drive
Torrington, CT 06790, USA
Tel. +1-860-496-9603
West Coast Tech Center
170 N. Maple #102
Corona, California 92880, USA
Tel. +1-860-496-9603
Midwest Tech Center
1620 Shanahan Drive
South Elgin, IL 60177-2277, USA
Tel. +1-860-496-9603
info.us@wittmann-group.com
www.wittmann-ct.com



world of innovation
www.wittmann-group.com